

Exhibit

By Alice B. Thomas

Kadonaga, Mabe works to go on view at Alexandria Museum

"Selected Sculptural Works by Kazuo Kadonaga" will be on view at the Alexandria Museum of Art from Saturday through May 12.

The exhibit will open at a 7-9 p.m. Saturday reception in honor of the artist and his wife. Steven Bradley, Ph.D. and Alexandria Museum director, organized the exhibit.

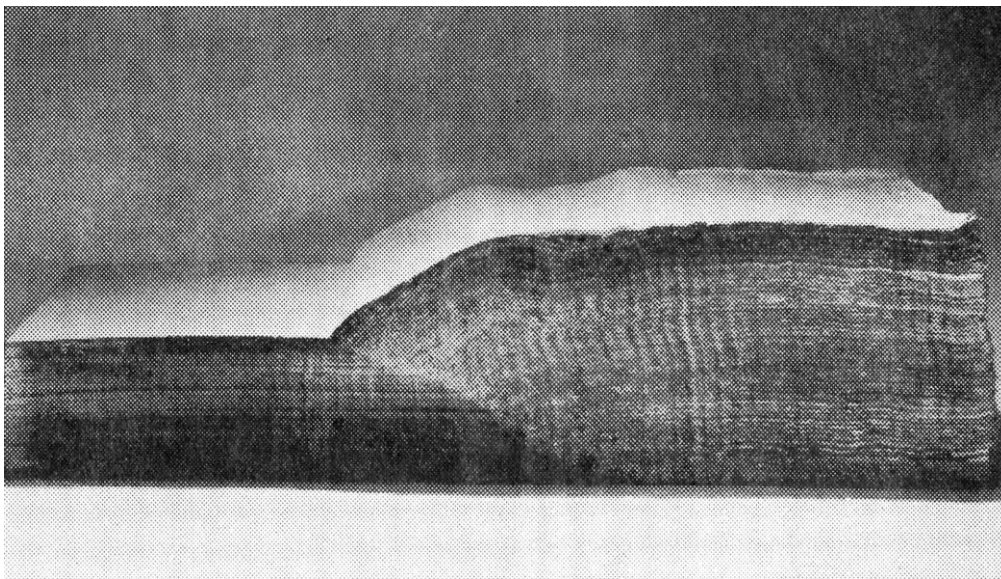
Also on view in the museum's 933 Window Works will be a display from Joni Mabe's "Traveling Museum of Obsessions, Personalities and Oddities."

The Kadonaga exhibit will include sculptural works in wood, paper and bamboo. Since the early 1970s, the Japanese artist has created large simplified geometric forms using

further cracking and warping, Ms. Stone said.

A series of handmade paper forms has also been created by Kadonaga. He has stacked as many as 300 sheets of washi (Japanese mulberry paper) to create a "solid" object. The exhibit will include several paper forms, as well as a number of bamboo shoots that have been heated or frayed to exaggerate the formal or structural qualities of the material.

"All of Kadonaga's objects are created to reveal simultaneously the inherent beauty of the natural form and the change in the form - not always negative - caused by human manipulation," Mrs. Stone said.



"Paper No. 1 BA, " is the title of this 1983 handmade paper work by Kazuo Kadonaga.

Japanese cedar or pine, handmade paper, bamboo shoots and, most recently, silk.

Kadonaga works within a traditional Japanese aesthetic that calls upon the artist to recognize and reveal the essential nature of his chosen material in the creation of the object, said Caroline Stone, the Alexandria Museum's curator of exhibitions.

Kadonaga's best known works are his log forms, generally of cedar from his family's forest in Ishikawa-Ken province. Some of these log forms, measuring 18 feet in length, have been scored or cut against the grain in random patterns and then cured, producing

The artist has produced a catalog documenting his work. A poster is also available for purchase.

This exhibition is supported by a grant from the International Paper Foundation with additional support provided by the Foreign Ministry of Japan through the efforts of the Consulate-General of Japan in New Orleans and the Honorable Mitsuru Eguchi, Consul General.

Miss Mabe, an Athens, Ga., resident, will present an abbreviated version of a work begun in 1983 and continuing to evolve.

A "gaudy, garish trash and fun found-object installation" is the way one art critic described Miss Mabe's work. Her museum features images of Liberace, Natalie Wood, Hank Williams, Jerry Lee Lewis, John F. Kennedy, Patsy Cline, Tiny Tim, James Brown, Alfred Hitchcock, Tammy Wynette and John Wayne. Also appearing is a version of Webb Pierce's guitar-shaped swimming pool interspersed with hundreds of trinkets and other objects.

The museum's 933 Window Works is supported by a grant from the National Endowment for the Arts.